

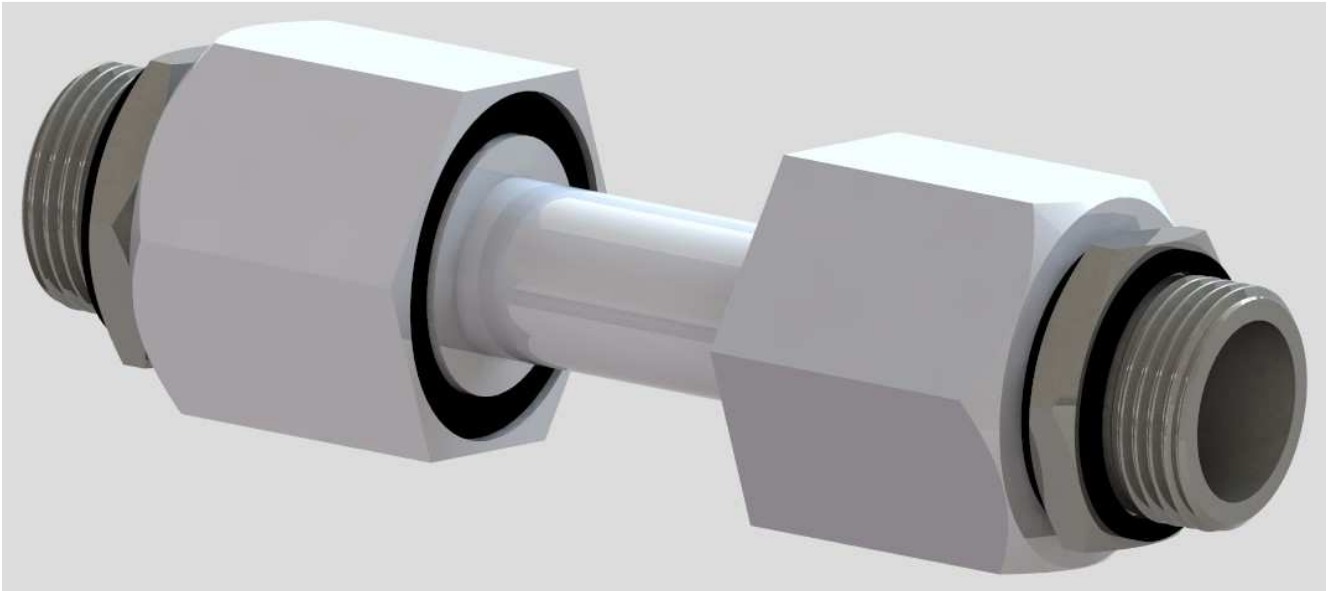
Wall duct and connection for breathing air

A wall duct is guiding pressurized breathing air through a wall into a working room. Inside of the working room, the wall duct could be equipped with a breathing air connection, for example. Wall ducts will be used in the frame of ventilating systems for protective suits.

Permissible operating pressure: max. 15 bar (when connecting Pedi safety couplings: max. 10 bar).

The wall duct

- is made out of stainless steel
- is made screwable (wrench width 50 mm)
- is equipped with sealing rings on both sides of the wall
- is foreseen for smooth surfaces and walls with any thicknesses
- needs a cored hole with diameter of 24 mm only
- is equipped with a male thread of G 1"
- is able to be fitted to any desired thread or coupling system by different adapters



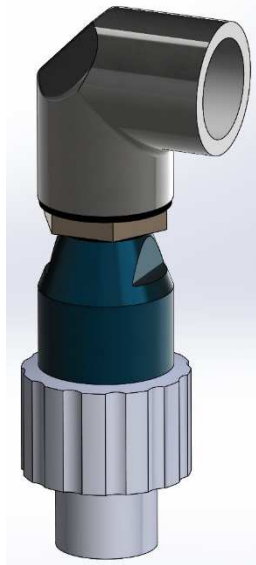
Example: Item no. 114840

Wall duct complete (male/female thread G 1" on both sides):

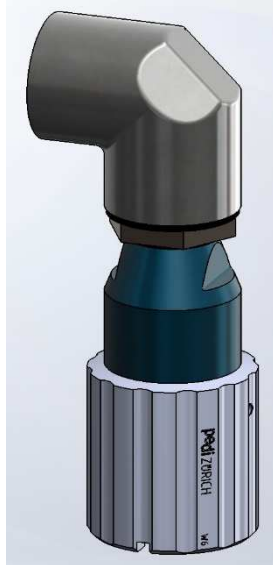
Item no.:	Description	Wall thickness
114840	Wall duct G 1" complete, stainless Specify effective wall thickness when ordering	till 50 mm
	Accessories:	
114820	Connection angle 90°, stainless, with female thread G 1" on both sides	

Breathing air connection

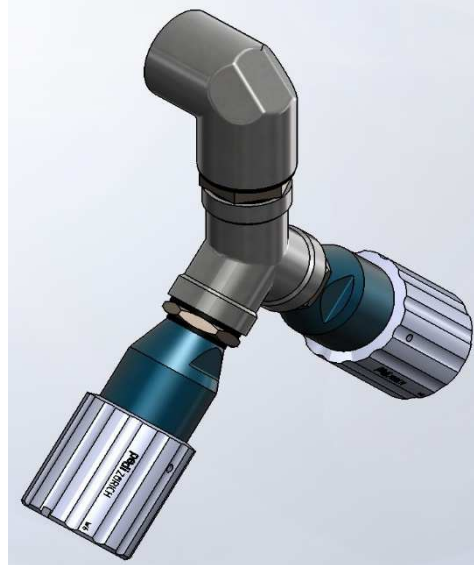
- is made screwable
- is able to be fitted to any desired thread or coupling system by different adapters



Item no. 115229



Item no. 114519



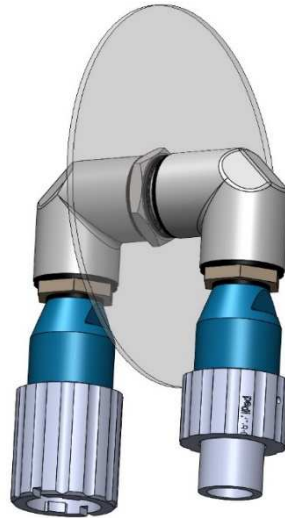
Item no. 114979

Breathing air connection complete (suitable for the wall duct G1"):

Item no.:	Description	Connection
115229	Breathing air connection single , stainless with 1 x PEDI security coupling M , hose barb of <u>Aluminium</u> , angle 90°	G 1"
114519	Breathing air connection single , stainless with 1 x PEDI security coupling F , hose barb of <u>Aluminium</u> , angle 90°	G 1"
115230	Breathing air connection single , stainless with 1 x PEDI security coupling M , hose barb of <u>Aluminium</u> , angle 90°	G 1"
115036	Breathing air connection single , stainless with 1 x PEDI security coupling F , hose barb of <u>stainless steel</u> , angle 90°	G 1"
114979	Breathing air connection double , stainless with 2 x PEDI security coupling F , hose barb of <u>Aluminium</u> , "Y" piece, angle 90°	G 1"
115037	Breathing air connection double , stainless with 2 x PEDI security coupling F , hose barb of <u>stainless steel</u> , "Y" piece, angle 90°	G 1"
	Accessories:	
114820	Connection angle 90°, stainless, with female thread G 1" on both sides	
114980	„Y" piece, stainless, with female thread G ¾" on both sides	
113839	Adapter with female thread G ¾" --> male thread G 1" for the connection onto a G ¾" line	
103219	Adapter with female thread G ½" --> male thread G 1" for the connection onto a G ½" line	

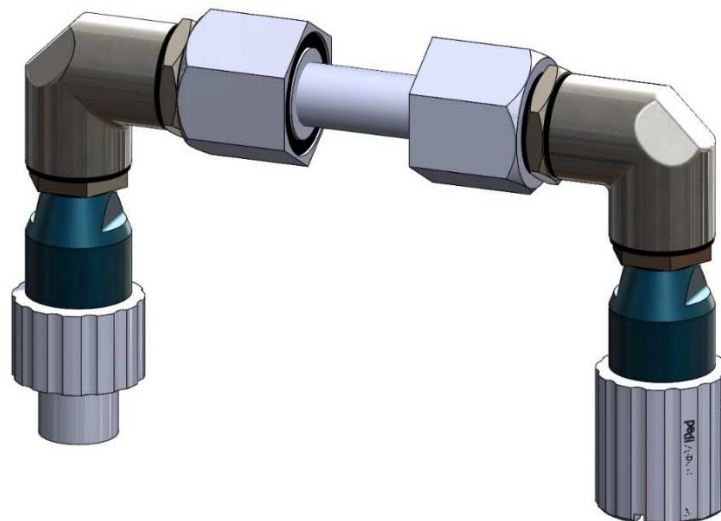
Duct with connection for breathing air used for decontamination tents, locks, housings:

- is made screwable
- suitable also for the afterwards mounting on any place.



Item no.:	Bezeichnung:	Connection
115564	Breathing air connection single , stainless with both PEDI security coupling M/F , hose barb of <u>Aluminium</u> , angle 90°	PEDI M (1x) PEDI F (1x)
116417	Breathing air connection single , stainless with both PEDI security coupling M/F , hose barb of <u>stainless steel</u> , angle 90°	PEDI M (1x) PEDI F (1x)

Example:



Item no.:	Bezeichnung:	Connection
116418	Breathing air connection single , stainless with both PEDI security coupling M/F , hose barb of <u>Aluminium</u> , angle 90° Wall thickness: till 50 mm, specify effective wall thickness when ordering	PEDI M (1x) PEDI F (1x)
115231	Breathing air connection single , stainless with both PEDI security coupling M/F , hose barb of <u>stainless steel</u> , angle 90° Wall thickness: till 50 mm, specify effective wall thickness when ordering	PEDI M (1x) PEDI F (1x)