

Negative Pressure Units for filtering contaminated room air

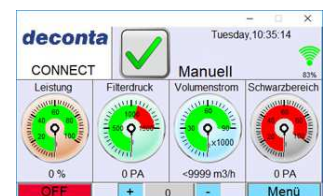
The Negative Pressure Units are used to filter contaminated room air and to maintain negative pressure in contaminated rooms. Due to the negative pressure, no contaminated air can escape from the black area. All the air passes through the unit where it is filtered several times. In addition to preliminary and intermediate filters, a choice can be made between H13 and H14 class Hepa filters. The negative pressure units can be attached to airlocks or work tents.

The Negative Pressure Unit are mainly operated on 230 V mains, the G100, G200 and G300 units are also available with 110 V power supply, G400 and G500 can only be operated on 400 V.

SE and SRE connect versions are available as control for the devices. SE means manual control of the output, the saturation of the filter is monitored with a pressure gauge. SRE connect offers a touch display on the device, with which the device is controlled and monitored manually or automatically. In addition, the data can be stored in the cloud and read from there with mobile devices and PCs. By means of the connect PRO version, the devices can also be controlled remotely.

If desired, the SRE connect control system automatically regulates the negative pressure and the volume flow and monitors the particle concentration in the exhaust air with a filter sensor.

- Filtration 2-stage or 3-stage
- HEPA filter according to EN 1822 available in class H13 or H14
- Mains voltages:
 110 V (G100, G200, G300),
 230 V (G55, G100, G200, G300),
 400 V (G400, G500, G700)
- Air flow rate with filters from 1'000 m³/h to 70'000 m³/h
- The devices are equipped with wheels or can get them as an option
- Option: Intake or discharge flange with NW 150 or 300
- Option: Double filtration for HEPA filters
- Accessorie: Connection hose with bulkhead fitting for monitoring the negative pressure in the tent



Negative Pressure Units: available sizes and versions

Item no	Model	Dimensions	Version
151331	G 55	525x390x390	Control SE, 230 V, air performance 1'000 m ³ /h
151332	G 100	770x410x410	Control SE, 230 V, air performance 1'650 m ³ /h
116039	G 100	770x410x410	Control SRE connect, 230 V, air performance 1'650 m ³ /h
151334	G 200	970x410x840	Control SE, 230 V, air performance 3'000 m ³ /h
151335	G 200	970x410x840	Control SRE connect, 230 V, air performance 3'000 m ³ /h
151336	G 300	1150x720x840	Control SE, 230 V, air performance 5'150 m ³ /h
151337	G 300	1150x720x840	Control SRE connect, 230 V, air performance 5'150 m ³ /h
151338	G 400	1200x720x1150	Control SE, 400 V, air performance 7'800 m ³ /h
151339	G 400	1200x720x1150	Control SRE connect, 400 V, air performance 7'800 m ³ /h
151340	G 500	1180x785x955 715x720x1150	Control SE, 400 V, air performance 12'000 m ³ /h
151341	G 500	1180x785x955 715x720x1150	Control SRE connect, 400 V, air performance 12'000 m ³ /h
151342	G 700	2990x2435x2890	Control SRE connect, 400 V, air performance 70'000 m ³ /h

Other versions on request.

Accessories for the Negative Pressure Units: available sizes and versions

Item no	Model	Version
116138	AU1022	Bulkhead fitting for hose 6/88 for negative pressure measurement in the tent
116139	AU1317	Hose PE 6/8 for negative pressure measurement in the tent

Other versions on request.

Spare parts filter: availables versions

Item no	for model	Version
151343	G 55	Intermediate filter G4 (EU4)
151344	G 55	HEPA filter H13
151345	G 55	HEPA filter H14
116041	G 100	Pre filter G3 (EU3)
116042	G 100	Intermediate filter G4 (EU4)
151348	G 100	HEPA filter H13
116043	G 100	HEPA filter H14
151350	G 200	Pre filter G3 (EU3)
151351	G 200	Intermediate filter G4 (EU4)
151352	G 200	HEPA filter H13
151353	G 200	HEPA filter H14
151354	G 300	Pre filter G3 (EU3)
151355	G 300	Intermediate filter G4 (EU4)
151356	G 300	HEPA filter H13
151357	G 300	HEPA filter H14
151358	G 400	Pre filter G3 (EU3)
151359	G 400	Intermediate filter G4 (EU4)
151360	G 400	HEPA filter H13
151360	G 400	HEPA filter H14
151362	G 500	Pre filter G3 (EU3) (2 pcs are needed)
151363	G 500	Intermediate filter G4 (EU4) (2 pcs are needed)
151364	G 500	HEPA filter H13 (2 pcs are needed)
151365	G 500	HEPA filter H14 (2 pcs are needed)
151366	G 700	Bag filter F5 (12 pcs are needed)
151367	G 700	Intermediate filter G4 (EU4) (12 pcs are needed)
151368	G 700	HEPA filter H13 (12 pcs are needed)
151369	G 700	HEPA filter H14 (12 pcs are needed)

Options: available sizes and versions

Item no	Model	Version	
151370	G 55 G 100	Discharge flange ND 150	
151371	G 55 G 100	Discharge flange ND 300	
151372	G 55 G 100	Suction flange ND 150	
151373	G 55 G 100	Suction flange ND 300	
151374	G 200	Suction flange ND 300	
151375	G 300	Suction flange ND 450	
151376	G 55 G 100	Suction flange 4-fold, 4 x ND 100, individually adjustable	
116103	G 55 G 100	Chassis	
116111	G 55 G 100	Chassis with platform, height 908 mm	
151378	G 200	Stacking device set	
151379	G 300	Stacking device set	
151380	G 55	Double-filtration for HEPA filter H13	
116070	G 100	Double-filtration for HEPA filter H13/H14, air performance 1'200 m ³ /h	
151382	G 200	Double-filtration for HEPA filter H13/H14, air performance 2'800 m ³ /h	
151383	G 300	Double-filtration for HEPA filter H13/H14, air performance 4'750 m ³ /h	
151384	G 55 G 100	Bag filter	
151385	G 200	Bag filter casing	
151386	G 300	Bag filter casing	
151387	G 100 G 200 G 300	Network connection for control system SRE+	